

QUAD Flo™

by Tomlinson®

"The Quad-Flo™ bypass valve is the finest valve on the market. It's the only valve we use. The Quad-Flo is maintenance-free. It does not leak and it's the easiest to operate."


Ted Bowen—Rayne Water Systems, Irvine, CA

"I use the Quad-Flo bypass valve in my installation of water treatment systems. My work is well recognized and my jobs sell for me when I am not there. A good part of that perception is based on the Quad-Flo bypass valve."

Roger Garrett—Purely Water Inc., Sparta, NJ

"We recommend the Quad-Flo bypass valve to our dealer customers to use with every whole house system installation. It's easy to operate and the homeowners appreciate the simplicity."

Dick Smith—Pro-Flo Products, Cedar Grove, NJ



Only Quad-Flo™ two-position, four-way bypass valves use a Quad-Seal™ made of DuPont Teflon® to ensure smooth, positive operating action even with infrequent use. A single 90 degree turn of the two-position handle allows full service to pass.

U.S. manufactured of high quality brass, Quad-Flo bypass valves are designed for quick installation and servicing, making them the superior choice for water softeners, general liquid bypass, diverter systems and solar systems.

Shown: Model No. C-75 with 3/4" sweat fittings

Special Features:

- U.S. manufactured, high quality brass/Teflon® construction.
- Unique Quad-Seal™ made of Teflon® protects and seals all internal sealing surfaces from water flow.
- The lowest pressure drop to flow rate ratio of all multi-purpose valves in the industry.

Installation Features:

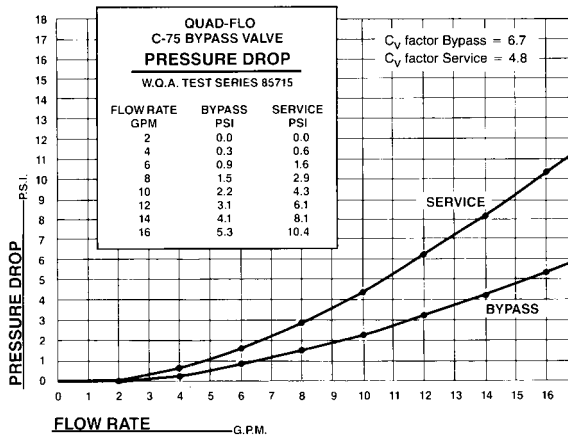
- **Flexible**—Designed for soft solder and threaded installations.

Model	Part No.	Size	Fittings
C-75	1017459	3/4"	Copper Sweat x Copper Sweat
C-100	1017462	1"	Copper Sweat x Copper Sweat
CP-75	1017460	3/4" NPT	Copper Sweat x NPT Internal Thread
P-75	1017461	3/4" NPT	NPT Internal Thread x NPT Internal Thread

- **Quick**—No disassembly for torch soft solder type installation.
- **Convenient**—Handle conveniently repositions for use; leaving ample clearance for plumbing.

Sales Features:

- Smooth, easy, single-handle operation.
- Unaffected by water pressure surges.
- Can be used as a metering valve for equipment start up and servicing.
- One year warranty.



Tested by the Water Quality Association Testing Laboratory.

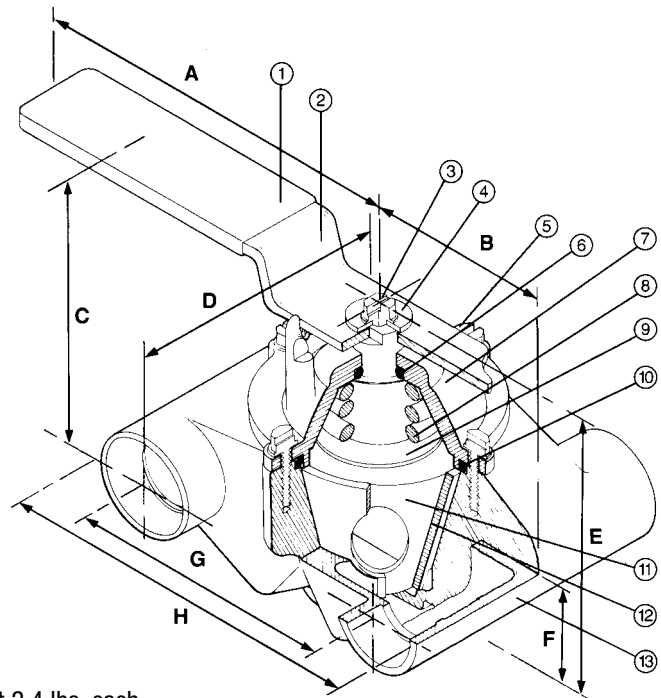


Teflon® is a registered trademark of E.I. DuPont Company.

Parts List

Ref. No.	Description	Material	Part No.
1	Handle Grip	Vinyl	1917471
2	Handle	Heat Treated Plated Steel	1917472
3	Cap Screw	Stainless Steel	1917473
4	Washer	Stainless Steel	1917474
5	Cap Screw	Stainless Steel	1917475
6	O-Ring Small	High Temperature Silicone	1917477
7	Cap	Cast Brass	1917478
8	Spring	Stainless Steel	1917480
9	Thrust Washer	Teflon	1917481
10	O-Ring Large	High Temperature Silicone	1917476
11	Plug	Cast Brass	1917483
12	Seal (Conical)	Teflon	1917484
13	Body, C-75	Cast Brass	1917463
	Body, C-100	Cast Brass	1917470
	Body, CP-75	Cast Brass	1917466
	Body, P-75	Cast Brass	1917467

Model	A	B	C	D	E	F	G	H
C-75 3/4" Sweat	4 1/2"	2"	2"	3"	3"	1 1/16"	3"	4 3/16"



Weight 2.4 lbs. each
Packaged weight of 10 valves 28.7 lbs.