



# SUN EARTH

## THE HE SERIES

### SOLAR STORAGE TANK SPECIFICATION SHEET

### Applications



Solar Water Heating

### Features:

HE Solar Storage Tanks:	
Heating Element:	4500 Watt
Tank Construction:	Glass-Lined Steel
Heat Exchanger:	Double Wall Vented Copper Tubing
Anode Rod:	3/4" NPT Magnesium
Insulation:	2" Non-CFC Foam
Max Operating Pressure:	150 psi
Temperature   Pressure Relief:	210°F   150 psi
Drain Valve:	LEAD-FREE Brass
Compliance:	UL/cUL Listed to UL-174 CAN/CSA-C22.2 No. 110-M90

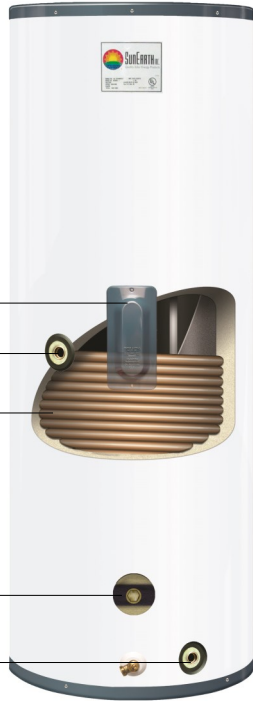
4.5 kW Backup Element

Solar Return

Copper Heat Exchanger

1/2" NPT Sensor Probe Port

Solar Supply



### Available Connections

- 3/4" NPT.

Units meet and exceed ANSI requirements and have been tested according to D.O.E procedures. Units meet or exceed the energy efficiency requirements of NAECA, ASHRAE standard 90, ICC Code and all state energy efficiency performance criteria.

### General:

SunEarth's premium HE series features brass drain valves, temperature and pressure relief valves and an insulated tank design for better heat retention. With solar supply and return fittings located on the front of the tank and cold water inlet, hot water outlet, relief valve and anode rod at the top of the tank it has very easy access and which makes a fast and economical installation possible. Dip tubes take the cold water to the bottom of the tank, preventing it from mixing with hot water at the top.

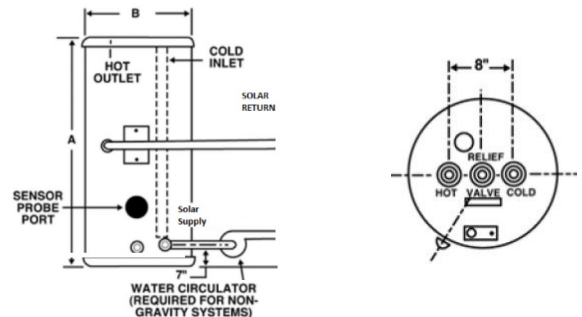
### Technical Specification:

HE Solar Heat Exchanger Tanks:							
Model Number	Capacity Gallon	Number of Heating Elements	Element Wattage (240 V)	Insulation R Value	Jacket Diameter (B)	Height Top of Tank (A)	Approximate Shipping Weight
SU80HE-1	80	1	4500	17.3	24-1/2	58-3/4	222 lbs.
SU120HE-1	119	1	4500	17.3	28-1/4	62	380 lbs.

To prevent corrosion, proper pH levels in transfer fluid must be maintained. | SunEarth's models meet all current state requirements for solar storage tanks. | The tanks are designed to operate up to 150 psi.

Heat Exchanger Data:		
Model Number	Coil Capacity (Gallon)	Tube Length (Ft)
SU80HE-1	2.2	120
SU120HE-1	2.6	143

Pressure drop through coil: (Feet of H <sub>2</sub> O)		
Flow Rate (GPM)	Head Loss (FEET)	
	SU80HE-1	SU120HE-1
1	1.3	1.6
2	4.8	5.7
3	10.0	12.0



Max Working Pressure = 150 PSI Tube ID: 5/8"  
Max Temp. 185°F

Due to SunEarth's policy of continuous product improvement, specifications are subject to change without notice.



8425 Almeria Avenue  
Fontana, CA 92335 (909) 434-3100  
www.sunearthinc.com